



kronus™

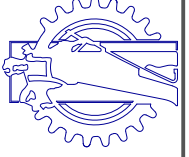
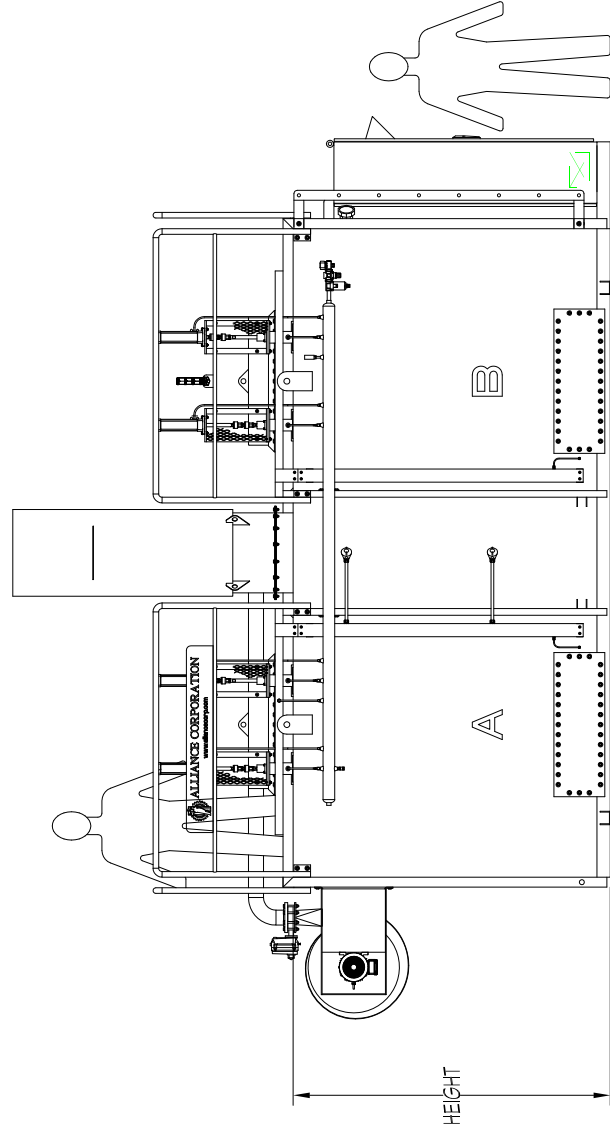
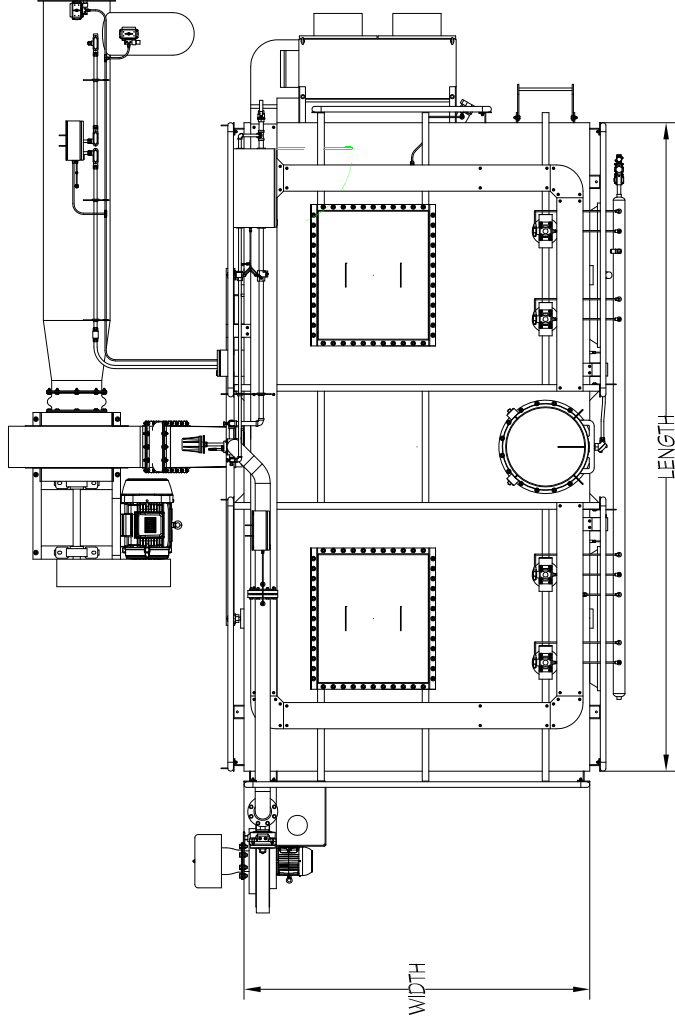
Introducing the KRONUS™ by Alliance Corporation, a cost efficient compact modular RTO system that offers an outstanding value in emissions control equipment. KRONUS™ RTOs have been installed in a broad range of process applications across North America.

Standard features:

- ✓ 95% to 98% VOC destruction
- ✓ 95% thermal efficiency
- ✓ Factory pre-assembled
- ✓ Completely pre-piped
- ✓ Completely pre-wired
- ✓ Easy installation
- ✓ 1/4" Carbon steel housing
- ✓ 8" Compressed SuperWool® insulation
- ✓ Structured heat exchange media
- ✓ Chemically etched paint prep, 2 part epoxy primer and urethane finish coat
- ✓ Air cooled site glass
- ✓ Machined billet steel poppet valve seats
- ✓ Solid stainless steel poppet shafts with purged housings
- ✓ Maintenance free shaft guide bearings
- ✓ Pneumatic poppet actuators with internal cushions and dual alignment couplers
- ✓ Machined billet steel poppet disk hubs & caps
- ✓ Instrument air header/reservoir with regulator
- ✓ Process fan complete with vibration isolators, vacuum manifold (including quick connects), and discharge transition
- ✓ Variable frequency drive
- ✓ Circuit breakers
- ✓ Full instrumentation includes; process vacuum, process flow, RTO differential pressure, fuel gas flow and combustion air flow sensors in addition to pressure switches and thermocouples for precise control
- ✓ Automatic analog sensor calibration
- ✓ Digital air/gas ratio and throttle control
- ✓ Telemetry/VPN
- ✓ Graphic operator interface
- ✓ Stacked beacon lights
- ✓ 7-Day programmable automatic start/stop timer
- ✓ Complete with handrails and ladder for access
- ✓ Lifetime software warranty
- ✓ Full factory testing includes burner firing

NOTES:

1. DIMENSIONS AND WEIGHTS ARE FOR ESTIMATION PURPOSES ONLY. FINAL DIMENSIONS AND WEIGHTS WILL BE PROVIDED WITH THE PROJECT ENGINEERING DOCUMENTS AFTER THE CONTRACT HAS BEEN AWARDED.
2. SOME DETAILS ON FAR SIDE OF THE ELEVATION VIEW ARE NOT SHOWN FOR CLARITY.



ALLIANCE CORPORATION

KRONUS 2-BED REGENERATIVE THERMAL OXIDIZER
BASIC DIMENSIONS

Date: 10-AUG-2001
Scale: N/A

Drawing No.: KRONUS LINE
Revision No.: 2

MODEL	NOMINAL FLOW	LENGTH	WIDTH	HEIGHT	WEIGHT
204	4,000 SCFM	12'-0"	8'-6"	7'-11"	27,100 LBS.
206	6,000 SCFM	16'-3"	8'-8"	7'-11"	35,900 LBS.
208	8,000 SCFM	19'-11"	9'-2"	7'-11"	46,100 LBS.
210	10,000 SCFM	23'-5"	9'-9"	7'-11"	56,300 LBS.
212	12,000 SCFM	23'-5"	10'-10"	8'-4"	65,700 LBS.